

V70 XC (01-) / XC70 (-07), 2006, B5254T2, AW50/51  
AWD, L.H.D, YV1SZ595761211090, 211090

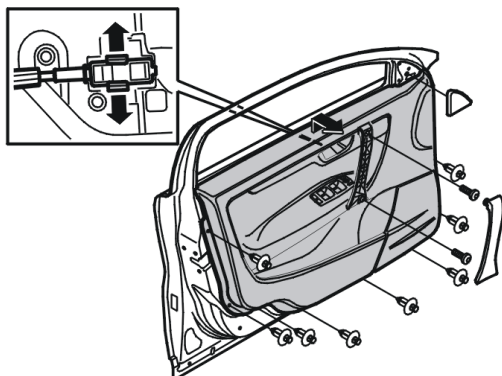
15/9/2019



PRINT

## Replacing the front door side panel

### Removing the panel from the front side door



Remove the cover from the mirror by pulling it straight outwards. Detach the side piece handle at the bottom edge. Use a weatherstrip tool.

Remove:

- the two screws
- the eight clips.

Twist the panel outwards and upwards.

Disconnect the mechanical cable for the inner door opener.

Disconnect the connectors.

### Installing the panel on the front door

Install:

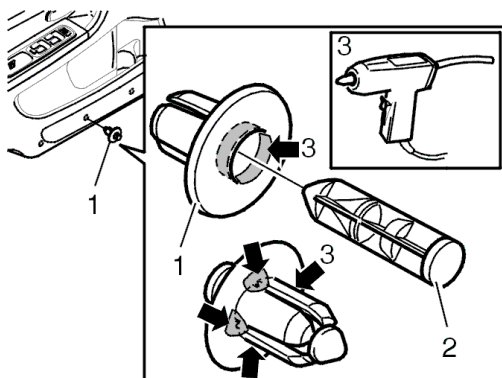
- the connectors
- the mechanical cable for the inner door opener.

Hang the panel in position.

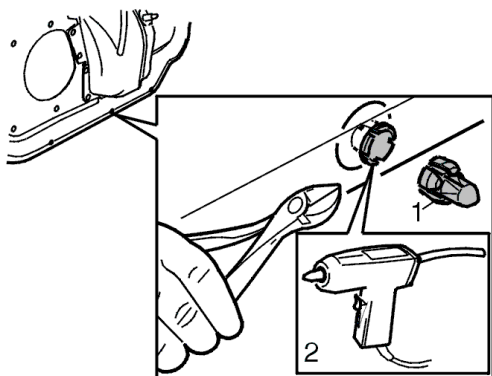
Install:

- the clips
- the screws
- the side piece handle
- the cover for the mirror.

**Note! Ensure that the mounting for the mechanical cable for the inner door opener secures correctly in the clip.**



**Note! Certain inner door sides do not have a hole for a clip. These door panels must be modified. Take a correctly coloured door clip. Cut off the clip. Bond the clip to the door. Do not forget the centre section of the clip.**



15/9/2019

PRINT